

9 Vincent Street, Bradford, West Yorkshire BD1 2PJ
£575 PCM

Whilst maintaining a relaxed residential feel, Vincent House enjoys a central location with an array of cosmopolitan bars, restaurants and stores within easy reach. A city of contrasts, Bradford is easily accessible from Leeds and Harrogate and is only minutes away from breath taking countryside. Sophistication and style are the hallmarks of this development.

Available at £575pcm this apartment will not be available for long!!

Locate
The Property Experts

Locate Properties UK LTD

29-31 North Parade, Bradford, West Yorkshire, BD1 3JL

t. +44 (0) 01274 720 900



@locatehomesbfd

e. info@locatehomes.co.uk



www.locatehomes.co.uk

Registered in England & Wales No. 5161728

ENTRANCE/VESTIBULE

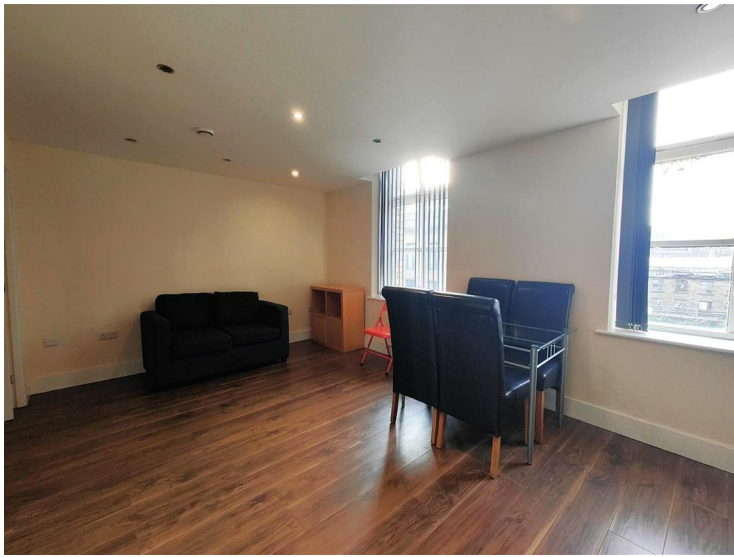


BEDROOM ONE



Double room with carpets, window and wall heater.

LOUNGE



Open-plan space with feature window to front elevation, laminate floors, lights to ceiling, wall heater, TV aerial point, phone point. Fully fitted designer kitchen featuring a range of fitted wall and base units, fridge/freezer, fan oven, electric hob and stainless steel extractor unit, stainless steel bowl and a half sink, work surfaces, lights to ceiling.

BATHROOM



Three piece suite comprising: low level wc, pedestal wash hand basin with cupboard under, panelled bath with shower over, mirror with light above basin, chrome heated towel rail.

KITCHEN ANGLE



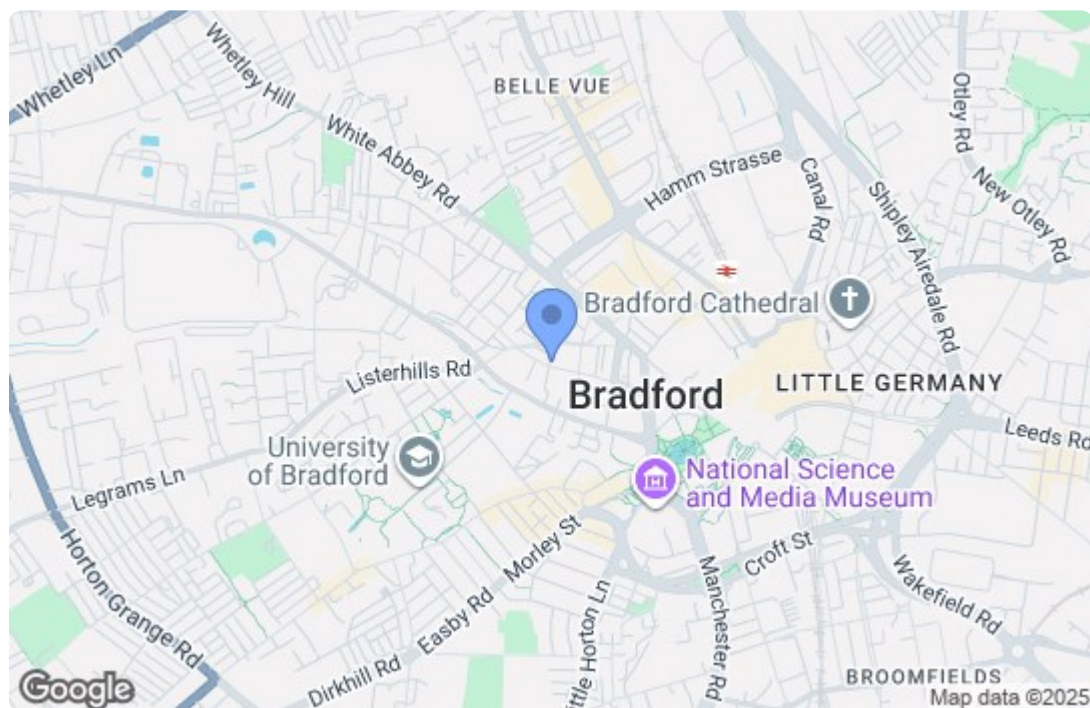
ANGLE TWO

UTILITY ROOM



EXTERIOR





Energy Efficiency Rating		
	Current	Potential
Very energy efficient - lower running costs		
(92 plus) A		
(81-91) B		
(69-80) C	70	71
(55-68) D		
(39-54) E		
(21-38) F		
(1-20) G		
Not energy efficient - higher running costs		
England & Wales		EU Directive 2002/91/EC
Environmental Impact (CO ₂) Rating		
	Current	Potential
Very environmentally friendly - lower CO ₂ emissions		
(92 plus) A		
(81-91) B		
(69-80) C	78	78
(55-68) D		
(39-54) E		
(21-38) F		
(1-20) G		
Not environmentally friendly - higher CO ₂ emissions		
England & Wales		EU Directive 2002/91/EC